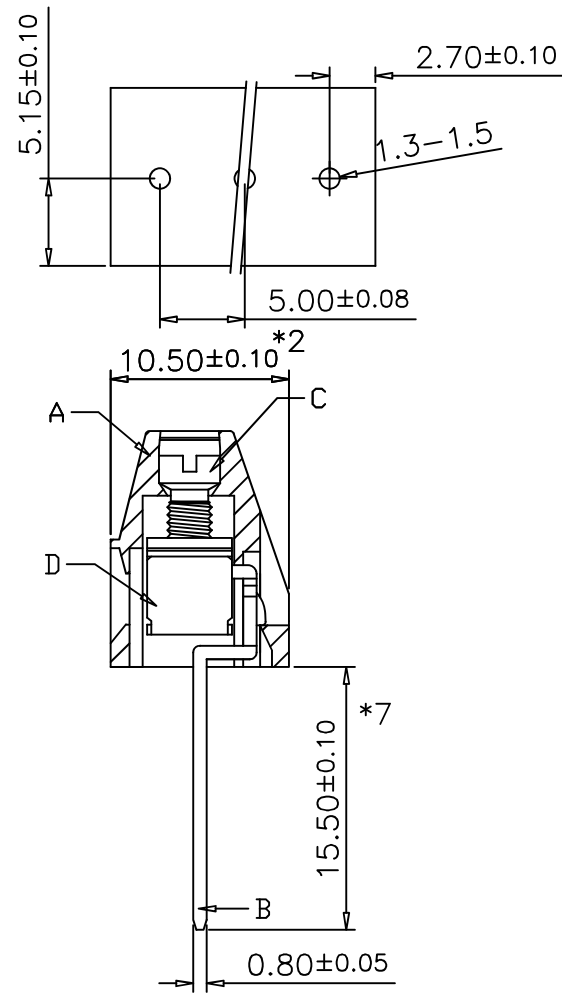
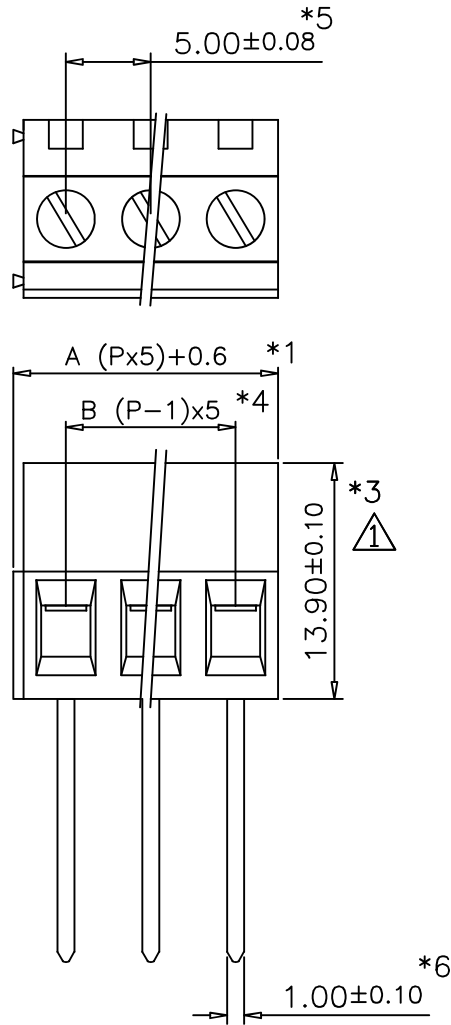


REVISIONS				
ZONE	REV	DESCRIPTION	DATE	APPROVED



✓	Poles	A±0.30	B±0.20		17	85.60	80.0
	02	10.60	5.0		18	90.60	85.0
	03	15.60	10.0	↓	Poles	A±0.45	B±0.35
	04	20.60	15.0		19	95.60	90.0
	05	25.60	20.0		20	100.60	95.0
	06	30.60	25.0		21	105.60	100.0
↓	Poles	A±0.35	B±0.25		22	110.60	105.0
	07	35.60	30.0		23	115.60	110.0
	08	40.60	35.0		24	120.60	115.0
	09	45.60	40.0	↓	Poles	A±0.50	B±0.40
	10	50.60	45.0		25	125.60	120.0
	11	55.60	50.0		26	130.60	125.0
	12	60.60	55.0				
↓	Poles	A±0.40	B±0.30				
	13	65.60	60.0				
	14	70.60	65.0				
	15	75.60	70.0				
	16	80.60	75.0				

Screws Torque: 7.0 In-Lb
 Wire Range: 16~22 AWG
 Rated: 10 Amperes.AC250V
 Operation Temperature: -55°C~+100°C
 Insulation withstands volt: AC2000V min
 Insulation resistance: >1000MΩ/DC500V min
 Part Number:

TS-506-XXP
 02~26 Poles

	Material	Plating/Finish	Remark
A	Insulating body PA66 UL 94V-0		Green
B	Terminal Brass	Tin	
C	Screw Steel	Zinc	
D	Clamp Brass	Nickel	
E			

Size update From 13.85 to 13.90

文件發行
 2024.06.12
 JULIA



				PART NAME	UNIT	REVISION
				Terminal Blocks	MM	
DESIGN	CHECK	APPROVED	DRAWING NO.	CERTIFIED		SHEET
DATE	DATE	DATE				1/1